



2020-2021 IMPACT REPORT

BUILDING A WORLD



Building a World...



"URI, from its beginning, has intended to change the world. From within, from the heart, from work that enriches lives and communities! We change the world by building a global family of willing peacebuilders."

The Right Rev. William E. Swing

President and Founding Trustee



"The future of URI rests in the dreams of the multitudes, and in hands such as yours. Together, we can build a world that is just, equitable, and peaceful, through united religions and united hearts."

Swamini Adityananda Saraswati

Interim Executive Director



"Throughout the fragility and turbulence experienced in today's world, URI Cooperation Circles are spearheading impactful action and healing through respectful relationships. The resulting experience is of a powerful sense of community underpinned by equality, empathy and empowerment."

Kiran Bali, MBE JP

Chair, Global Council of Trustees



URI Impact by Region and Action Areas

ARTS



67

COMMUNITY
BUILDING



368

CONFLICT
TRANSFORMATION



411

EDUCATION



210

ENVIRONMENT



328

HEALTH AND
SOCIAL SERVICES



267

HUMAN RIGHTS



107



AFRICA

239 CCs

32 Countries



NORTH AMERICA

95 CCs

2 Countries



EUROPE

60 CCs

25 Countries



SOUTHEAST
ASIA AND THE
PACIFIC

54 CCs

8 Countries

1,077 Cooperation Circles (URI member groups) Work in 113 Countries and 14 Action Areas

INDIGENOUS
PEOPLES



160

INTERFAITH
DIALOGUE



1077

MEDIA



55

POLICY
ADVOCACY



38

POVERTY
ALLEVIATION



100

WOMEN



333

YOUTH



524



MIDDLE EAST AND
NORTH AFRICA

91 CCs

16 Countries



ASIA

397 CCs

13 Countries



MULTIREGION

79 CCs

Worldwide



LATIN AMERICA AND
THE CARIBBEAN

62 CCs

17 Countries



BUILDING A WORLD

where neighbors help
neighbors in times of crisis.

“Dalits, who are often oppressed tribal and/or outcast, are in desperate need of food and groceries. Lockdown has restricted already-bad job prospects, causing tremendous hardship. So we started collecting donations, providing them with food and other necessities in Nepal, Jharkhand, Bihar, and Bengal.”

Biswadeb Chakraborty

National India Team Coordinator and Regional Coordinator for URI Asia – India East Zone

As the Covid-19 pandemic overtook the world, URI and its member groups (Cooperation Circles or CCs) sprang into action around the globe. Across India, Pakistan, Bangladesh, Nigeria, Cameroon, and beyond, CCs and URI staff organized and distributed donations of food, medical supplies, and more. Pictured at right, **Parliament of the People CC** (URI member group in Schaumburg, South Africa) distributes necessities door-to-door to families who are struggling with scarcity and hunger.

Other examples of actions include **WEDO GLOBAL CC** (URI member group), which is distributing 4,000 free masks to ethnic minority families and elderly residents in Hong Kong. **House of Hilkiah Foundation CC** (URI member group in Benue State, Nigeria) provides agricultural supplies and farming aid to support women who lost access to nutrition and income during the pandemic.

Find a list of other COVID-19 response work by URI and its members at uri.org/covid.



AFRICA



SOUTHEAST ASIA
AND THE PACIFIC



ASIA



BUILDING A WORLD

**where the scars of violence can
be healed by hope.**

"I provided a platform for them [the Military and the Moro Islamic Liberation Front Ceasefire Committee] to sit together. So much to be done, especially the armed groups of both parties. I am honored that both of them have the trust to allow me to facilitate this noble undertaking."

Musa Sanguila

Pakigdaít Director and URI Philippines Coordinator



After decades of violent conflict, the fighters of the Moro Islamic Liberation Front are reintegrating into Philippine society. Stepping forward during this delicate moment, the members of **Pakigdait Inc. CC** (URI member group) are aiding the normalization process by offering livelihood assistance as a peaceful way forward. Members distribute sewing machine kits, tilapia fish for farming, and sacks of feed and supplements. With these sources of sustainable income, the former militants can see a clear path to becoming

active, peaceful members of society. Musa Sanguila, Pakigdait Director and URI Philippines Coordinator, is key to the implementation of these positive efforts.

Assistance like this helps the Liberation Front fighters establish partnerships with the Armed Forces of the Philippines. Rather than engaging as previously in violent conflicts, all parties now cooperate in building the foundation of lasting peace. "There is no other way to peace," Pakigdait asserts. "Peace is the only way."



SOUTHEAST ASIA
AND THE PACIFIC

URI addresses widespread conflict at a human level. Learn more at uri.org/peacebuilding



BUILDING A WORLD

**where faith communities lead
the way to help save the planet.**

"I am very delighted that the United Nations Environment Programme is partnering with the United Religions Initiative in India and elsewhere...in these capacity-building meetings and dialogue discussions."

Dr. Iyad Abu Moghli

Founder and Director of the United Nations Environment Programme (UNEP) Faith for Earth Initiative



FAITH FOR EARTH



ONE EARTH
MANY RELIGIONS
ONE GOAL



With the world's climate at a tipping point, URI and the United Nations Environment Programme (UNEP) have been joining hands since 2020 for the **Faith for Earth Initiative**. Together, URI and UNEP are training faith leaders and their communities to become environmental heroes.

Through this initiative, URI and UNEP have gathered many of India's foremost faith leaders to help provide them with the tools and techniques to directly impact climate change and environmental degradation. Lending their support along the way are global environmental leaders and other esteemed experts.

Speakers emphasize the necessity for scientific communities and faith communities to work hand-in hand towards global sustainability and achieving the UN Sustainable Development Goals by 2030. The program also provides toolkits and resources, while facilitating faith leaders in drafting their own Climate Action Plans.

This UNEP/URI Faith for Earth Initiative will soon also be held in Bosnia and the MENA (Middle East North Africa) region, to promote peace through a sustainable future.



MULTIREGION

URI unites to heal and protect the Earth. Learn more at uri.org/environment



BUILDING A WORLD

**where human rights are
upheld everywhere.**

"I hope that society will move toward a better future. A future without hate and discrimination. A future where people of all faiths, all races, all varieties of lifestyle can live together in peace...because of this, I am a member of URI."

Marianne Horling

URI Global Trustee



The URI network brings people together from around the world to connect for peace, justice, and healing. When Jennifer Taj, member of **Golden Star CC** (URI member group in Pakistan), moved to Bonn, Germany for her studies, she connected with URI Global Trustee, Marianne Horling, who is also member of **URI Deutschland CC** (URI member group in Germany), and ultimately, Jennifer joined their efforts.

Together with URI friends and members from around the world, the peacebuilders gathered with thousands of others in Bonn to advocate for human rights and dignity for all.

“Despite the limitations of the current coronavirus pandemic,” they reported, “people felt encouraged to unite.” The URI peacebuilders shown here come from Germany, Pakistan, Ghana, and the USA.



MIDDLE EAST



EUROPE



AFRICA



NORTH AMERICA



BUILDING A WORLD

**where the voices of youth
are valued at every level.**



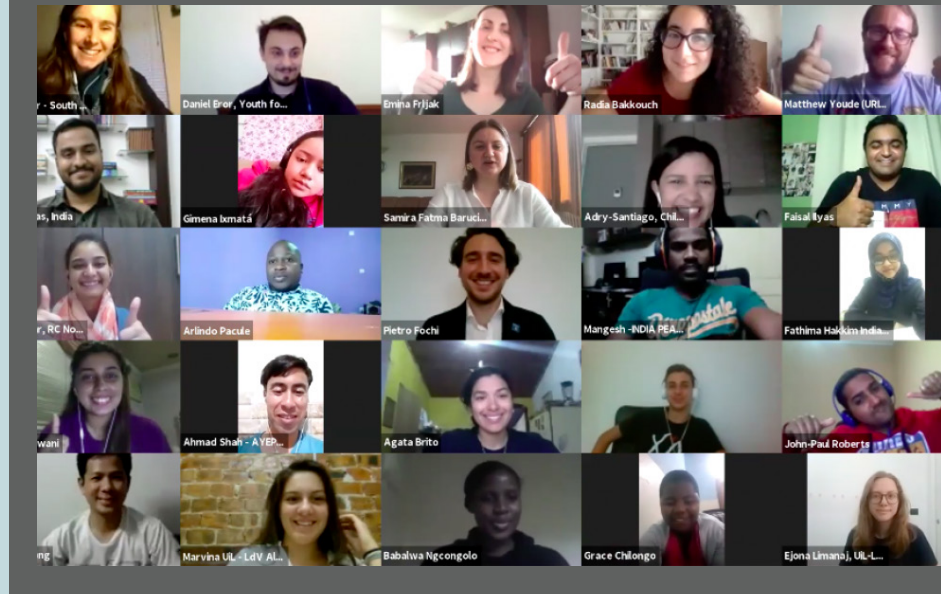
"In URI, we are proud of our age equity and diversity, and we strongly promote intergenerational dialogue and learning at every level."

Sarah Oliver

Associate Director of Global Programs

The URI network connects peacebuilders of all ages. In 2020, URI held four **Youth Connection Cafés** which brought together young people, under the age of 35, from 29 different countries. A URI Youth Connection Café is a virtual meeting place where young people across URI can network, share projects, and discuss relevant issues from their experiences and contexts.

In 2020, these Youth Connection Cafés included topics such as: youth visions for peace, examining race in the interfaith movement, strengthening connections to nature, and the role of young people in building and sustaining peaceful, just, and inclusive societies. URI and Cooperation Circles (URI member groups) took turns hosting each other, as participants joyfully discovered and expressed their global solidarity.



MULTIREGION

URI respects the wisdom of young people, and works to promote youth as leaders. Learn more at uri.org/youth

Our Leadership

URI is sincerely grateful to our leaders for their steadfast commitment to accelerate peace in the world.

URI Global Council of Trustees

CHAIR

Kiran Bali, MBE JP, United Kingdom

AT-LARGE TRUSTEES

Becky Burad, USA

Hereditary Chief Phil Lane Jr., Canada

Milka Wambui Ngige, Kenya

Sok Sidon, Cambodia

EXECUTIVE TRUSTEES

Swamini Adityananda Saraswati, USA

The Right Rev. William E. Swing, USA

AFRICA

Fr. John Ng'oma, Malawi

The Right Rev. Macleord Baker Ochola II, Uganda

The Honorable Elisha Buba Yero, Nigeria

ASIA

Ravindra Kandage, Sri Lanka

Rev. Kalyan Kumar Kisku, India

Dr. C.N.N. Raju, India

EUROPE

Daniel Eror, Bosnia and Herzegovina

Rev. Hierodeacon Petar Gramatikov, Bulgaria

Marianne Horling, Germany

Duncan Wielzen, Netherlands (Ex-Officio)

LATIN AMERICA AND THE CARIBBEAN

Salette Aquino, Brazil

Rosa Delia Quizpze Macas, Ecuador

Francisco Morales Ventosa, Argentina

MIDDLE EAST AND NORTH AFRICA

Anwar Dahak, Yemen

Naoufal El Hammoumi, Morocco

Dr. Omar Tayeh, Jordan

MULTIREGION

Perri (P.K.) McCary, USA

Morgana Sythove, Netherlands

Issac Thomas, India

NORTH AMERICA

Geneva Blackmer, USA

Adeola Fearon, USA (Ex-Officio)

Fred Fielding, USA

Valeria Vergani, Canada

SOUTHEAST ASIA AND THE PACIFIC

Dr. Potre Diramptan-Diampuan, Philippines

Peter Mousaferiadis, Australia

Bishop Stephen L. Villaester, Philippines

URI President's Council

CHAIR

John Weiser

PRESIDENT AND FOUNDING TRUSTEE

The Right Rev. William E. Swing

INTERIM EXECUTIVE DIRECTOR

Swamini Adityananda Saraswati

HONORARY MEMBERS

William K. Bowes Jr. (In Memoriam)

Margaret G. Gill (In Memoriam)

The Hon. George P. Shultz (In Memoriam)

Rupert H. Johnson Jr.

Connie Lurie

Archibald McClure

Dame Charlotte Mailliard Shultz

Chandler Tagliabue

Paul Tagliabue

Kat Taylor

MEMBERS

Preeta D. Bansal

Daisy Berexa

Peter Carpenter

J. Robert Coleman Jr.

Mary Cranston

Donald Derheim

Sarah Freitag

William P. Fuller

Judith Gadaldi

Jill H. Kramer

The Hon. Richard Livermore

Robert Lurie

George Marcus

David Newson

Rabbi Stephen S. Pearce

Suzanne E. Siskel

Roselyne Chroman Swig

EX-OFFICIO

Kiran Bali, MBE JP

Chair, URI Global Council of Trustees

Daniel Eror, URI Global Council of Trustees

URI Individual Membership Group

LEADS

David Newson

Barbara Shannon

The Right Rev. William E. Swing

MEMBERS

Preeta D. Bansal

Daisy Berexa

Donald Derheim

Sarah Freitag

William P. Fuller

Judith Gadaldi

Jill H. Kramer

Swamini Adityananda Saraswati
John Weiser

URI Circles of Light Committee

Salette Aquino, Brazil
Kiran Bali, MBE JP, United Kingdom
Samira Baručija, URI Multiregion
Daisy Berexa, USA
J. Robert Coleman Jr., USA
Donald Derheim, USA
Naoufal El Hammoumi, Morocco
Daniel Eror, Bosnia and Herzegovina
Susan Cook Hoganson, USA
Gail Moore, USA
Rabbi Stephen S. Pearce, USA
Swamini Adityananda Saraswati, USA
Rita Semel, USA
Morgana Sythove, Netherlands
The Right Rev. William E. Swing, USA
Issac Thomas, India

URI Audit Committee

CHAIR

Stephen Piuma

MEMBERS

David Steirman
Beth Veniar

URI Foundation, Inc. Board of Directors

CHAIR

Rabbi Doug Kahn

VICE-CHAIR

David Steirman

MEMBERS

Becky Burad
Julia Davidson
James D. Falaschi
Susan Cook Hoganson
Peter Mousaferiadis
Karen Pajarillo
Keley Petersen (Ex-Officio)
Peter Phleger, Esq. (Ex-Officio)
Swamini Adityananda Saraswati
(Ex-Officio)
Barbara Shannon
The Right Rev. William E. Swing
(Ex-Officio)
John Weiser

URI Foundation, Inc. Investment Committee

CHAIR

Keley Petersen

MEMBERS

Shilpa Andalkar
Jennifer Ayer
Lauriann Delay, CFA
Neil Jubaili
Michelle Owen
Kevin D. Rinow
Swamini Adityananda Saraswati (Ex-Officio)

URI Staff

EXECUTIVE STAFF

President and Founding Trustee
The Right Rev. William E. Swing
Interim Executive Director
Swamini Adityananda Saraswati

REGIONAL COORDINATORS

Samira Baručija, URI Multiregion
Biswadeb Chakraborty,
National India Team Coordinator and
Regional Coordinator for URI Asia –
India East Zone
Father James Channan,
URI Asia – Pakistan
Subhi Dhupar,
URI Asia – India North Zone
The Hon. Mussie Hailu, URI Africa
Regional Director and URI Representative
at the African Union
Dr. Emmanuel Ivorgba,
URI Africa – West Africa
Dr. Abraham Karickam,
URI Asia – India South Zone
Mamoun Khreizat,
URI Middle East and North Africa
Qutub Jehan Kidwai,
URI Asia – India West Zone
Nyasha Mukaratirwa,
URI Africa – Southern Africa
Despina Namwembe,
URI Africa – Great Lakes
Musa Sanguila, URI Southeast Asia and
the Pacific – North Zone
Sotheartat Seoung, URI Southeast Asia
and the Pacific – West Zone
Tahil Sharma, URI North America
Mahamoud Sougueh,
URI Africa – The Horn
Karimah Stauch, URI Europe
Dr. Enoé Texier,
URI Latin America and the Caribbean

URI AT THE UNITED NATIONS

The Hon. Mussie Hailu, URI Representative
at the UN and the African Union, and
Former Ambassador
Monica Willard, URI Representative to the
United Nations in New York

GLOBAL SUPPORT OFFICE

Pamela H. Banks,
Director of Finance and Administration
Biff Barnard,
Director of Institutional Advancement
Diana Conan, Director of Development
Maria Crespo, Director of Cooperation
Circle Support
Gaea Denker, Communications Manager
Ezra Fairley-Collins, Coordinator of
Individual Membership Development
The Hon. Mussie Hailu,
Director of Global Partnerships
Sally Mahé, Senior Consultant
Nosa Okunmwendia, Senior Accountant
Sarah Oliver,
Associate Director of Global Programs
Isabelle Ortega-Lockwood,
Director of Global Communications
and Strategic Planning
Alice Swett, Director of Global Programs
The Rev. Lauren Van Ham,
Climate Action Coordinator
Matthew Youde,
Associate Director of Global Programs

INDIVIDUAL MEMBERSHIP

Individual Members can now be a part of URI, the world's largest interfaith peacebuilding movement!

Whether you are a current donor or new to URI, join individuals from around the world in making a positive change in your local community.

We invite you to deepen your personal engagement by #BuildingAWorld with URI where peace, justice, and healing prevail.

Get started by signing up at uri.org/join





SUPPORT OUR FUTURE TOGETHER

IMPACT POSITIVE CHANGE

Build our future together by investing in URI's global network.

Be a catalyst for change and impact URI's efforts in communities around the world.

Express your commitment on the enclosed envelope or on URI's website.

**Every contribution matters...
... Come build a world with us!**

Invest in URI's Future

Multi-Year Giving

Pledge your annual contribution for several years.

Monthly Giving Circle

Commit to ongoing giving and contribute your donation in installments.

Legacy Circle Giving

Consider including URI in your estate plans and inform URI accordingly.

Endowment Support

Contact the URI Development Department with an interest in supporting URI with a significant gift.

Enhance URI's Visibility

Partnership Bridgebuilder

Help URI connect and develop partnerships with like-minded organizations including corporate and foundation connections.

Social Media Influencer

Spread the word about URI to your friends and colleagues through social media.

Connection Facilitator

Host an event to introduce URI to friends and colleagues; help raise awareness.

Media Outreach

Boost URI's visibility by connecting URI with local, national and international media.

Financials and donor list at uri.org/financials Give at uri.org/donate

The purpose of URI is to promote enduring, daily interfaith cooperation, to end religiously motivated violence and to create cultures of peace, justice and healing for the Earth and all living beings.



twitter.com/uriglobal



[facebook.com/
unitedreligionsinitiative](https://facebook.com/unitedreligionsinitiative)



youtube.com/uriglobal



instagram.com/uriglobal



**UNITED RELIGIONS
INITIATIVE**

P.O. Box 29242, San Francisco, CA 94129 USA
+1 415-561-2300 info@uri.org uri.org

URI is a 501(c)(3) nonprofit organization which relies on individual contributions to further its global efforts.